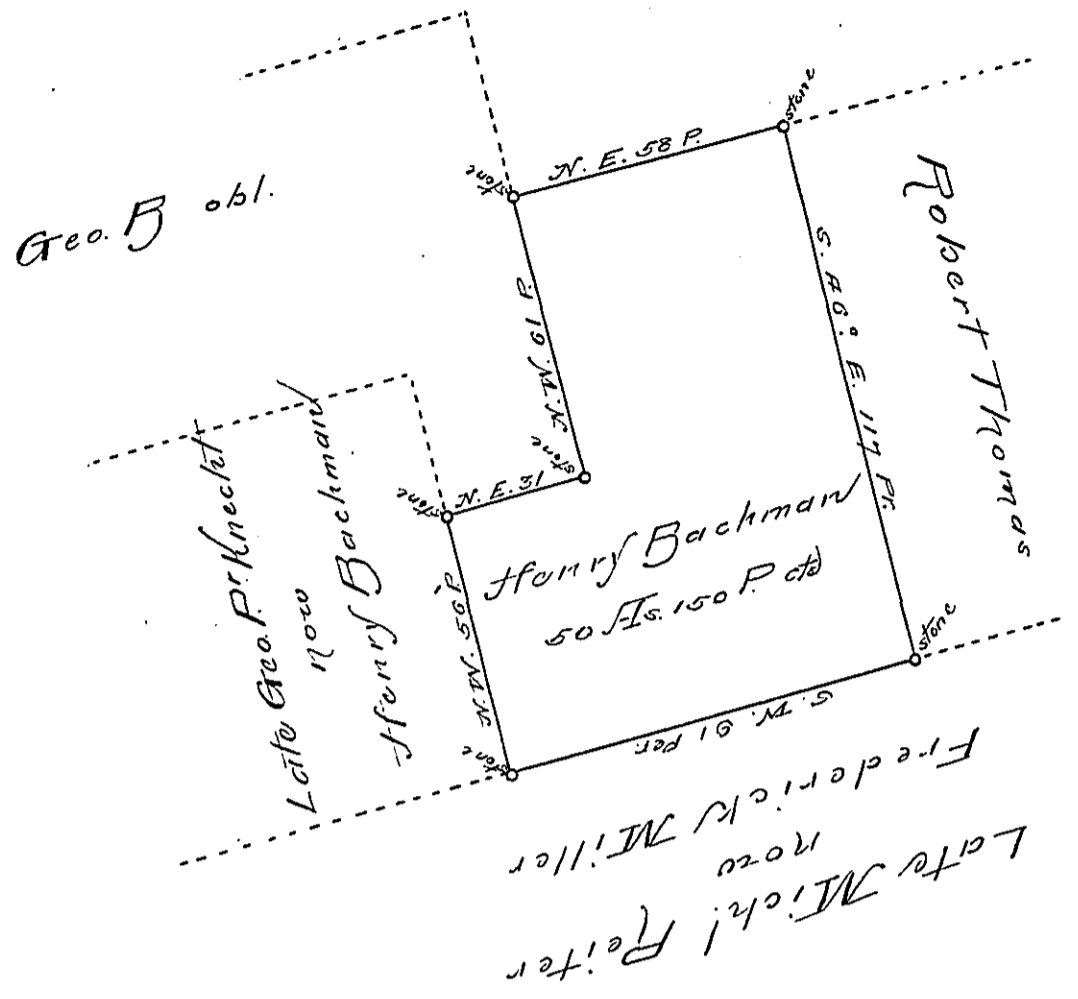


Late Michl Kyler  
now  
Elias Long Jun<sup>rs</sup> Heirs



A Draught of a Tract of Land, Situate  
 in Marlborough Township in the County of Phila-  
 delphia and Province of Pennsylvania.  
 Containing Fifty Acres and 150 Perches of Land  
 together with the usual Allowance of six per cent  
 for Roads. That was formerly Surveyed to  
 Philip Kyler in Pursuance of a Warrant granted  
 to him by the Honble Proprietaries Dated the 5<sup>th</sup> October  
 Anno 1740. The same was afterwards sold to Henry  
 Bachman to whom it was now Resurveyed on the  
 6<sup>th</sup> June Anno 1774. D. David Schultz

IN TESTIMONY that the above is a copy of the original remaining on file in the  
 Department of Internal Affairs of Pennsylvania, made con-  
 formably to an Act of Assembly approved the 16th day of  
 February, 1833, I have hereunto set my Hand and caused  
 the Seal of said Department to be affixed at Harrisburg, this  
 — thirtieth — day of — March — 1894  
 Thos. J. Stewart  
 Secretary of Internal Affairs.